

## CFZ- AS- 26



100% Copper Motor



Continuous 5D & High Thrust Air Flow



Large Water Tank Capacity



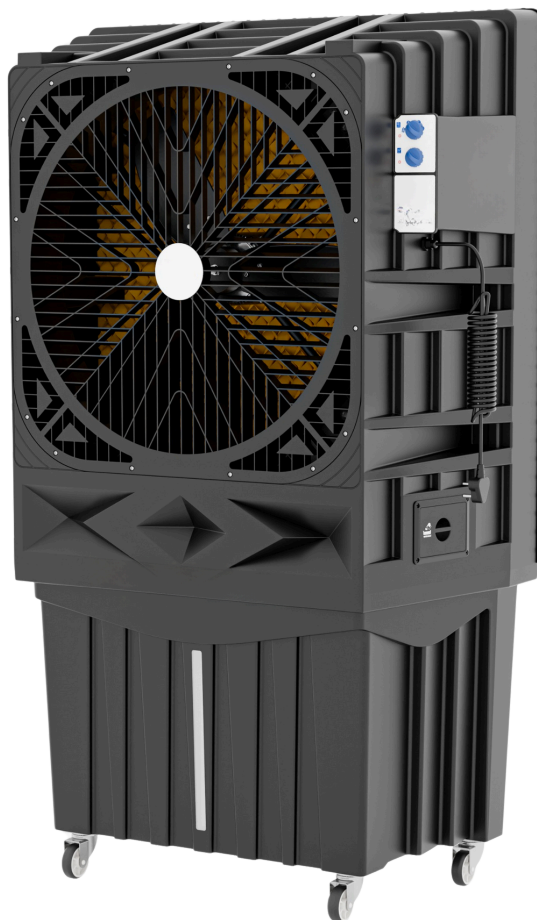
Pump Protection Technology



Low Noise



2 Stage Filtration



## FEATURES

- ✓ Industrial grade control knob
- ✓ Rigid body structure
- ✓ Rear plastic guard
- ✓ Powerful airflow
- ✓ Easy installation and maintenance
- ✓ 5D Louvers are designed to disperse air in all directions.
- ✓ High efficiency Honey Comb cooling pads with prefilter

## SPECIFICATIONS

Water Tank Capacity	260 L
Air Flow	26,000 CMH
Fan Type	Axial Fan
Fan Size	30 Inch
Motor Type	Single Phase 3 speed
Motor Winding	Copper Winding
RPM	950 RPM
Wattage	750 W
Motor Power	1 HP
Unit Size (mm)	1131*620*1642 MM
Cooling Pad Size (mm)	1100*100*1170 MM
Area coverage	3400 sq. ft.
Gross Weight Approx.	51 Kg

**AIRSTREAM SERIES**

